

Corali Information



www.corali.org.uk



Too Many DJ's 2008 photo: Laura Mitchison
Smudged 2008 with Rocket Artists photo: Ella Ritchie

Coral Background

Established in 1989, Corali Dance Company creates and tours original performance work mostly in London. Corali makes work in collaboration between performers, dancers and artists that have learning disabilities and those that do not. It is best known for its site-specific work and for its partnerships with high profile London venues such as Tate Modern, Whitechapel Art Gallery and The South Bank Centre.

www.corali.org.uk



Visual Voices 2009 photo: Peter Kendrick
Fold 2009 photo: Georgie Cockburn

What is *Coral* about

Coral is about dancing and making new performances.

Coral is about providing skills for people with learning disabilities so that they can be creative, work with other people and learn about dance.

Coral shows other people what is possible.

Coral is imaginative and works with other artforms and music, we like to have fun and share ideas.

Coral has a core company of performers and we offer education workshops. Both are equally important to us.



Scapes 2010 photo: Laura Mitchison

Coral Values

Quality & Creativity

Making sure our work is really good and coming up with new ideas

Pushing Boundaries

Never taking for granted what dance can be or what people with learning disabilities can do

Challenging Audiences

Surprising the people that see us

Collaboration

Sharing our work with other people, using different art forms, being part of a team

Getting Out There

Being seen by and working with lots of different people



Housni Hassan (DJ)
Session facilitator photo: Laura Mitchison

Coral*i* Expertise

Coral*i* works collaboratively with a skilled team of artists, performers and dancers. The experience of the artistic team ensures the quality of Coral*i*'s education and performance practice and makes for a rich and varied exchange.

Project planning is an essential part of Coral*i*'s practice and the Company's devised work lends itself to a democratic process, where no one voice is dominant and everyone can express their ideas and influence the ongoing work.

The team's experience includes, BBC TV appearances, international touring, improvisation festivals, solo performance invention and professional placements.



How Happy We Would Be 2010
photo: Laura Mitchison

Coralii Team 2010



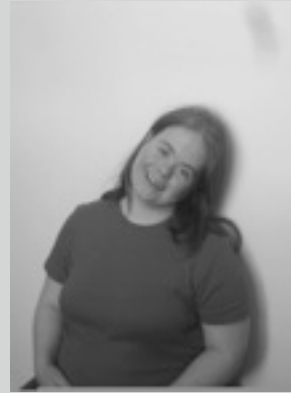
Sarah Archdeacon
Artistic Director



Georgie Cockburn
Participation Officer & Facilitator



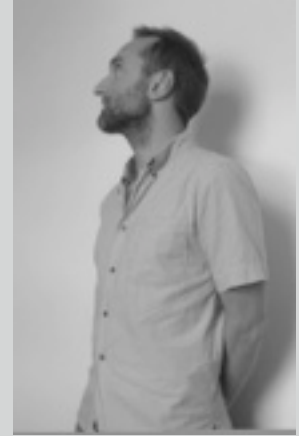
Bridget Chew
Artist & Facilitator



Jo Eastwood
Performer & Facilitator



Graham Evans
Performer & Facilitator



Jacobus Donovan Flynn
Artist & Facilitator



Housni Hassan (DJ)
Performer & Facilitator



Bethan Kendrick
Performer & Facilitator & Office Assistant



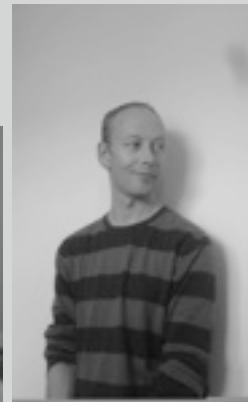
Marianne Rouvier-Angeli
Artist & Facilitator



Jackie Ryan
Performer & Facilitator



Hannah Souper
Performer & Facilitator



Daniel Weaver
Artist & Facilitator

Contact

www.coralidance.com



Coral

Address:

The White Building
Oval House Theatre
52 - 54 Kennington Oval
London SE11 5SW



Email: corali@btconnect.com

Telephone: 020 7091 7113